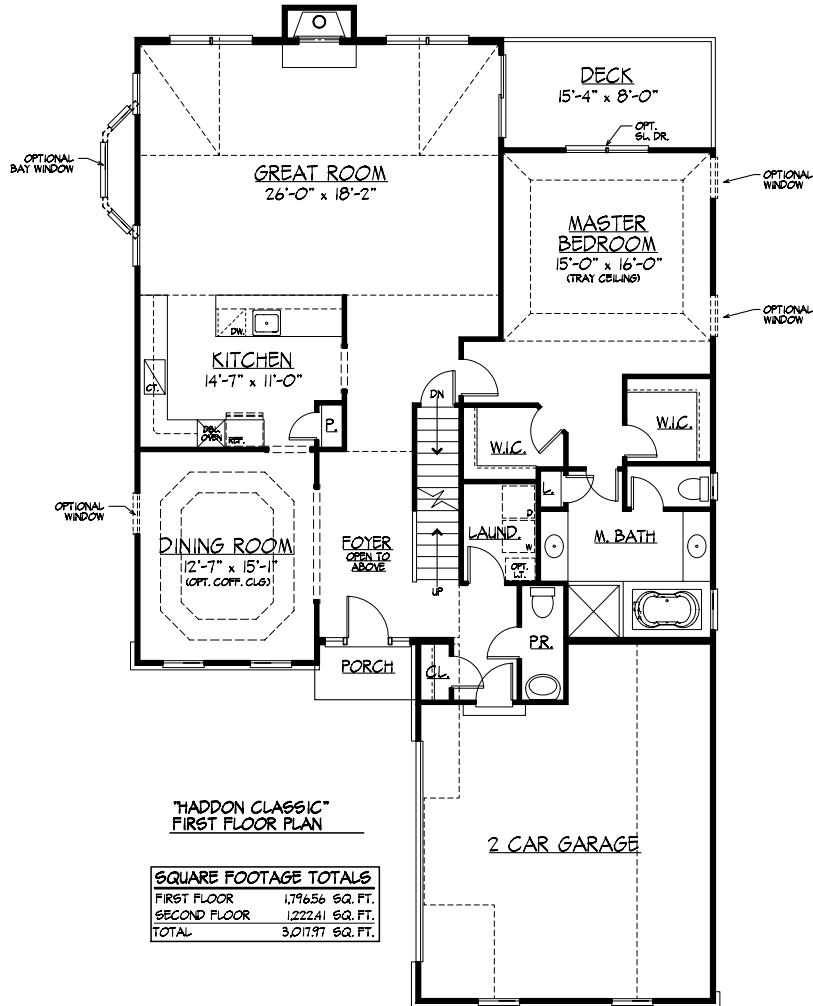


THE HADDON

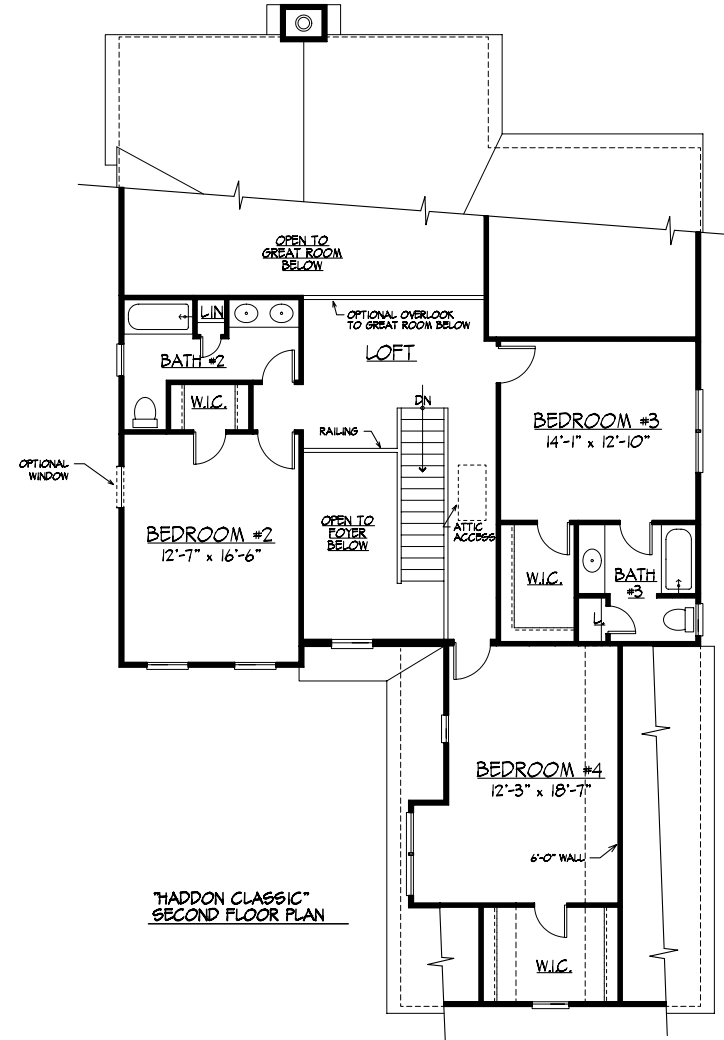
Crossland
AT THE CANAL

A Carriage Home



"HADDON CLASSIC"
FIRST FLOOR PLAN

"HADDON CLASSIC" FIRST FLOOR PLAN	
FIRST FLOOR	1,796.56 SQ. FT.
SECOND FLOOR	1,222.41 SQ. FT.
TOTAL	3,017.97 SQ. FT.



"HADDON CLASSIC"
SECOND FLOOR PLAN



artist's rendering