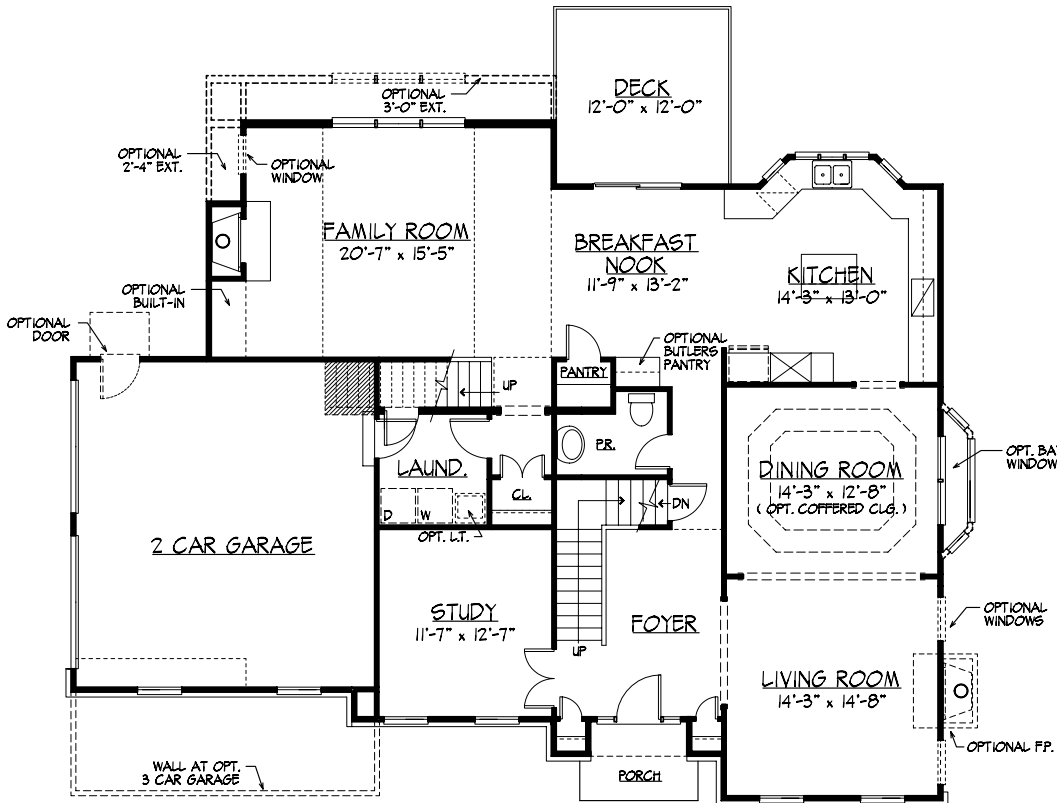


**THE CARLISLE**

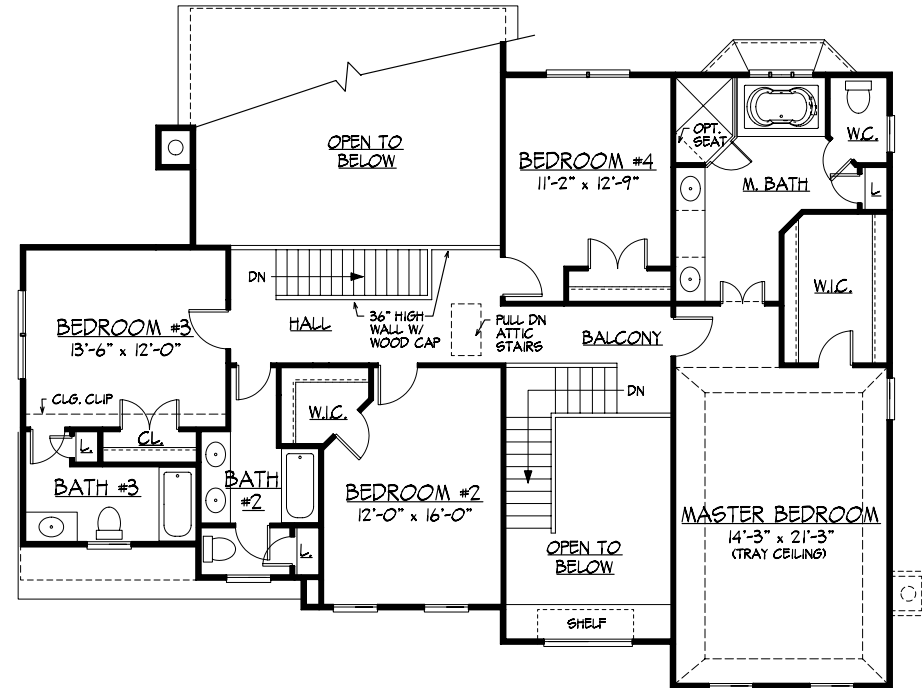
*Crossland*  
AT THE CANAL

An Estate Home



**"CARLISLE CLASSIC"  
FIRST FLOOR PLAN**

SQUARE FOOTAGE TOTALS	
FIRST FLOOR	1,719.35 SQ. FT.
SECOND FLOOR	1,571.30 SQ. FT.
TOTAL	3,290.65 SQ. FT.



**"CLASSIC"  
SECOND FLOOR PLAN**



artist's rendering